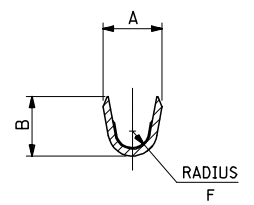
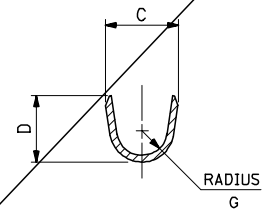
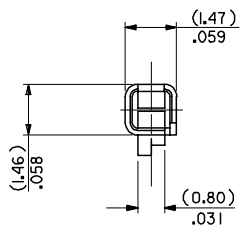


13 12 11 10

J
I
H
G
F
E
D
C
B
A

SECTION X-X

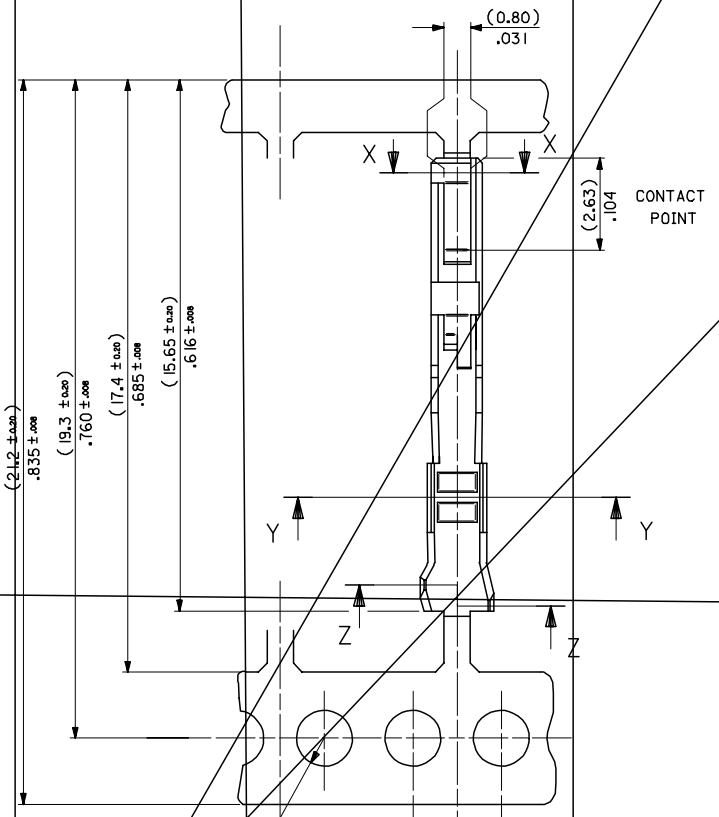


SECTION Z-Z

INSULATION BARREL

SECTION Y-Y

WIRE BARREL



CONTACT POINT

(0.15) MAX.
CUT-OFF
(SEE NOTE 5)

(0.15) MAX.
CUT-OFF
(SEE NOTE 5)

NOTES:

1. MATERIAL-
PHOSPHOR BRONZE CDA 521
THICKNESS: (0.200) ±.008
TENSILE STRENGTH= 655-760 N/mm²
PLATING - SEE SHEET 2
2. FOR DIMENSIONS A, B, C, D, F & G
SEE SHEET 2
3. FOR WIRE SIZE & INSULATION DIA
SEE SHEET 2
4. THIS TERMINAL TO MATE WITH
(0.635) ±.025 SQUARE PIN
5. MAX BURR AFTER CUT-OFF
(0.025) ±.001

(21.2 ±.008)
±.835 ±.008
(19.3 ±.008)
±.760 ±.008
(17.4 ±.008)
±.685 ±.008
(15.65 ±.008)
±.616 ±.008

(2.95 ±.0.8)
±.081 ±.004
(1.75)
±.069
(6.75 ±.008)
±.344 ±.008
(5.51)
±.217
(2.0)
±.079
(0.9)
±.035
(13.0)
±.512

∅ (1.60) ±.063 TYP.

∅ (∅.11) ±.004

(2.54) ±.100

(1.27) ±.050

(5.08) ±.200

REMOVED LEAD REF.

0
0

SEE CHART
A2

THIRD ANGLE PROJECTION

PART No	PLA NG	PEEL NG	W PE S 7Γ		NSULA ON		W PE BAPPEL		NSULA ON BAPPEL		VPC	PLA NG	
			(AWG)	P ANGE	A	B	Γ	C	D	A		PPΓ PL A Γ D O D F N	
0 0	Λ											(.0 0 2.5 Γ)	.00004 0 .000
0 20	Γ	L										(.27 0 .75 Γ)	.00005 0 .00007 N C EL
0 2	Λ	FEED											OVERALL.
0 22	Γ												(0.38 0 0.64 Γ) .0000 5 0 .000025 GOLD
2 09	Λ												ON CON AC APEA.
2 0	Γ												(3.0 0 5.0 Γ) .000 2 0 .0002 N
2 20	Λ												ON EPM/NA ON APEA
2 2	Γ												(.27 0 .75 Γ) .00005 0 .00007 N C EL
90 9 2 22	Λ												OVERALL.
	Γ												(0.76 0 0.0 Γ) .00003 0 .00004 GOLD
	Λ												ON CON AC APEA.
	Γ												(3.0 0 5.0 Γ) .000 2 0 .0002 N
	Λ												ON EPM/NA ON APEA.
	Γ												(.70) (2.0) (0.70)
	Λ												.067 .083 0.27
	Γ												(.37) (2.00)
	Λ												.054 .079

COL
L. FEED

