



JOLLY TECHNOLOGIES

Jolly Encoder Configuration Guide

The purpose of this guide is to document the supported hardware, media and configuration process for the Jolly Encoder.



Jolly Encoder

The Jolly Encoder is a software module for Jolly software products including ID Flow and Lobby Track. The module is capable of reading and writing several variations of MIFARE contactless cards and HID Prox cards when used with compatible card printers and smart card readers.

The Jolly Encoder is evolving as a product and may support additional hardware and card formats as development continues.

Supported Hardware and Media

- Evolis Card Printers with SpringCard CrazyWriter, HID OMNIKEY 5x21 or 5x25 Smart Card Readers
- FARGO Card Printers with HID OMNIKEY 5x21 or 5x25 Smart Card Readers
- MIFARE Classic contactless cards; other variations of MIFARE that do not require encryption / certificates may also work; MIFARE DESFire is not currently supported
- HID Prox cards

Installation

1. Install Jolly ID Flow or Lobby Track software
2. Install the card printer as instructed by card printer manufacturer
3. Install the smart card reader drivers; these are often not included with the card printer and must be downloaded and installed separately

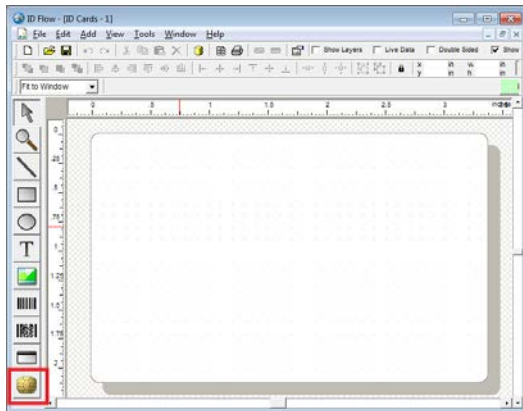
Configuration

1. After installation is complete, start the Jolly software and edit the card design
2. Click the Smart Card toolbox item

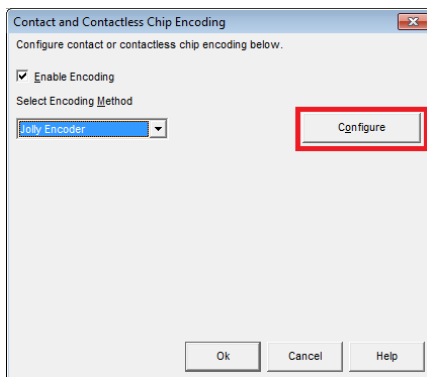
© Jolly, Inc. 2011. All rights reserved.

<http://www.jollytech.com>

The information contained in this document represents the current view of Jolly Technologies on the issues discussed as of the date of this publication. This paper is for informational purposes only. Jolly Technologies makes no warranties, express or implied in this document. Jolly, Jolly Technologies, ID Flow and Lobby Track are either trademarks or registered trademarks of Jolly, Inc. in the United States of America and/or other countries. The names of actual companies and products mentioned herein may be the trademarks of their respective owners.



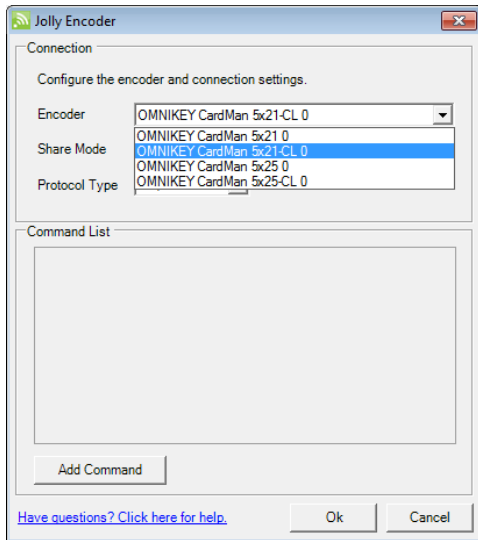
3. Check the Enable Encoding checkbox
4. Select Jolly Encoder
5. Click the Configure button



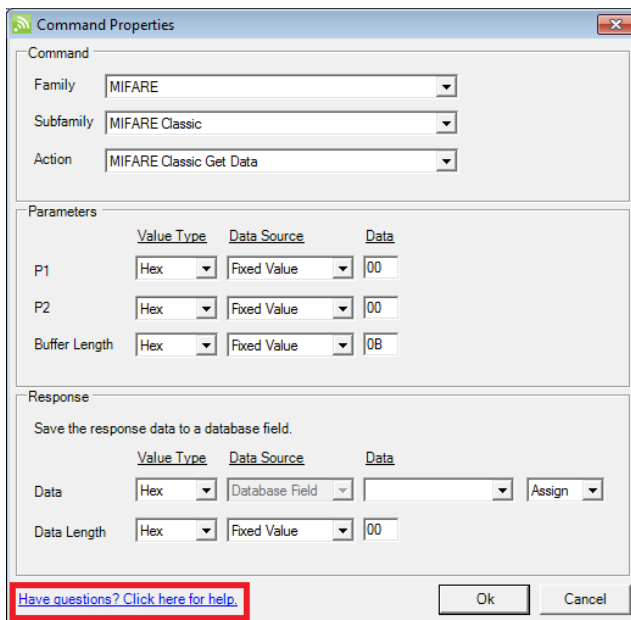
6. The smart card readers detected on the system will be listed

© Jolly, Inc. 2011. All rights reserved.
<http://www.jollytech.com>

The information contained in this document represents the current view of Jolly Technologies on the issues discussed as of the date of this publication. This paper is for informational purposes only. Jolly Technologies makes no warranties, express or implied in this document. Jolly, Jolly Technologies, ID Flow and Lobby Track are either trademarks or registered trademarks of Jolly, Inc. in the United States of America and/or other countries. The names of actual companies and products mentioned herein may be the trademarks of their respective owners.



7. Select the contactless smart card reader you would like to use, **for HID readers, the contactless versions are denoted with the -CL suffix**; Jolly software does not currently support contact smart cards
8. Click Add Command to add a reader command to the list. For more information about smart card commands, refer to the Help file



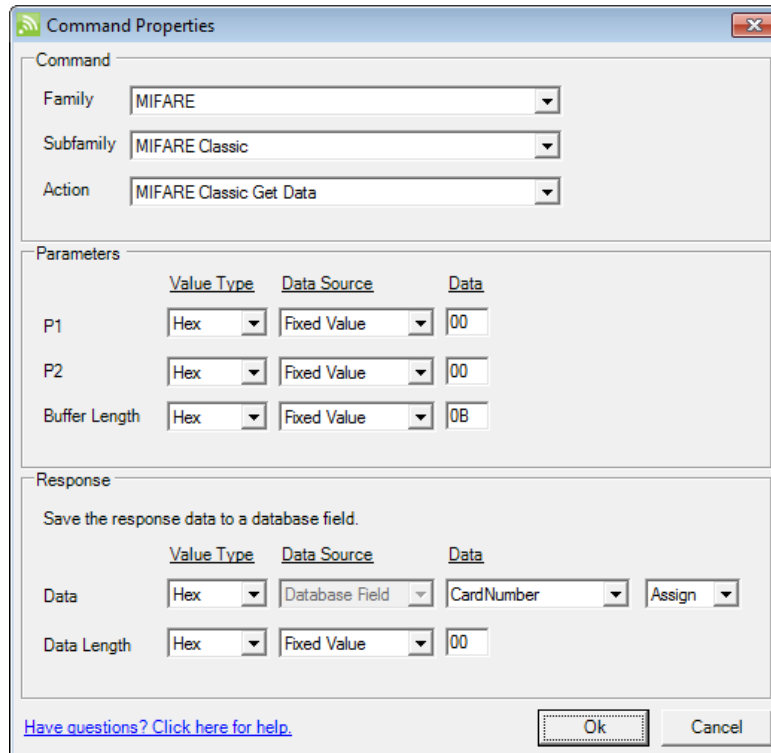
© Jolly, Inc. 2011. All rights reserved.
<http://www.jollytech.com>

The information contained in this document represents the current view of Jolly Technologies on the issues discussed as of the date of this publication. This paper is for informational purposes only. Jolly Technologies makes no warranties, express or implied in this document. Jolly, Jolly Technologies, ID Flow and Lobby Track are either trademarks or registered trademarks of Jolly, Inc. in the United States of America and/or other countries. The names of actual companies and products mentioned herein may be the trademarks of their respective owners.

Example Command:

Read a MIFARE Classic card's unique ID (UID) and save it to a database field called "CardNumber"

Select the Get Data command as shown below, and set the Response Data field to CardNumber

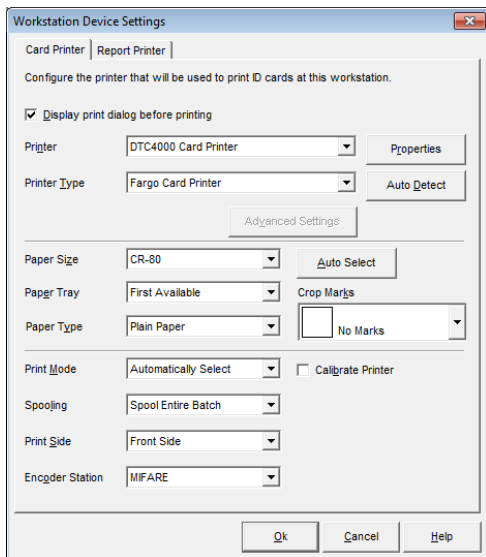


See the Advanced section later in this document for UID formatting information

9. When you are done adding commands, click Ok to close the dialogs
10. Close the card designer and save the changes to the card design when prompted
11. Open Workstation Settings and open the Printer Options dialog for the card printer you will be using; for example, in ID Flow, open Workstation Settings, click on Tasks > Enrollment, then click on Printer Options
12. Select your card printer in the Printer box
13. Select the printer's encoder station in the Encoder Station box; if you will be using MIFARE contactless cards, select MIFARE; if you will be using HID Prox cards, select Proximity Card

© Jolly, Inc. 2011. All rights reserved.

<http://www.jollytech.com>



14. Click Ok to save the settings

15. Confirmation is complete; when a card is printed, it will be read / written as configured

Alternatively you can choose to read / write a card without printing from the Record Center by selecting More (downward arrow button) > Current Record > Encode Card

Advanced

UID Formatting

The data returned by the GetData command will vary by card and reader type. You may be able to format the data returned by the reader, for example, to just return an HID Prox card number and not the facility code, by altering reader settings. Refer to your smart card reader documentation for details.

Example - read only the card number when using an OMNIKEY reader with an HID Prox card

1. Use the Windows Registry Editor to view the entry
[HKEY_LOCAL_MACHINE\SYSTEM\CurrentControlSet\Control\CardMan]
2. There should be a key "ProxFormat" with a DWORD value
3. Set the DWORD value to 2
4. Restart the PC

© Jolly, Inc. 2011. All rights reserved.

<http://www.jollytech.com>

The information contained in this document represents the current view of Jolly Technologies on the issues discussed as of the date of this publication. This paper is for informational purposes only. Jolly Technologies makes no warranties, express or implied in this document. Jolly, Jolly Technologies, ID Flow and Lobby Track are either trademarks or registered trademarks of Jolly, Inc. in the United States of America and/or other countries. The names of actual companies and products mentioned herein may be the trademarks of their respective owners.